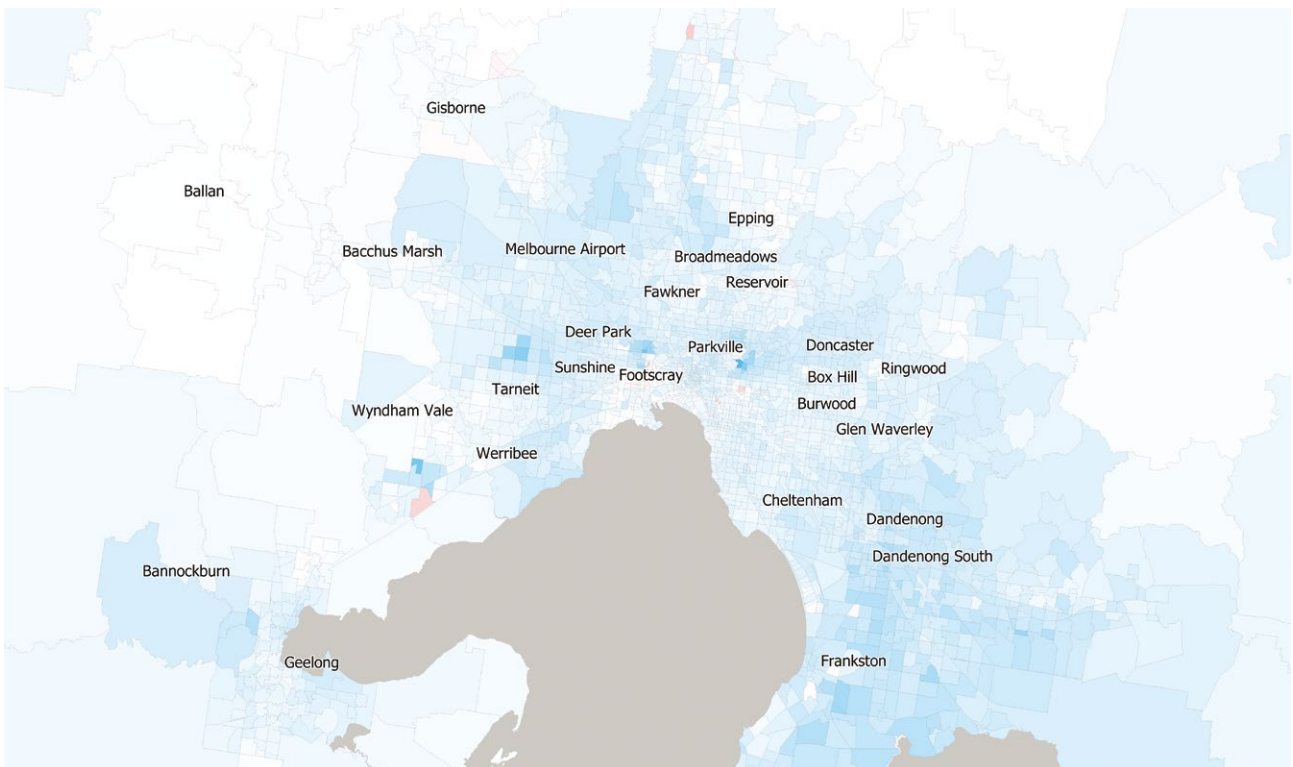


# Road Management Systems

## Recommendation 24



- \ Road management systems (RMS) are technology improvements across the arterial and local road network that make road operations more agile and responsive and help transport infrastructure perform better.
- \ An example of RMS is improved traffic signalling timing and coordination, which can be used to improve performance for vehicles, public transport, cycling, and pedestrians based on network priorities.
- \ Victoria's infrastructure strategy 2021–2051 recommends that in the next five years, new road network demand management technologies are introduced across the state and are combined with a road infrastructure upgrade program.
- \ Modelling and analysis demonstrates a compelling case for the RMS project, and it is a strong example of making better use of the infrastructure we already have.
- \ The economic assessment reveals that this project generates significant benefits across the network with a relatively low cost compared to other build interventions.
- \ Investment in improvements and modifications to our transport network can have substantial impacts, resulting in better outcomes for safety, travel times, network performance, and reliability for all road users.
- \ The benefits are also potentially statewide as the program can be rolled out across Victoria, with investment focused on congested parts of the road network in both metropolitan and regional areas.



**Changes in private vehicle travel times with the RMS project, 2036**

*Given the strategic nature of the model used to illustrate these benefits, model noise can lead to small travel time increase anomalies.*